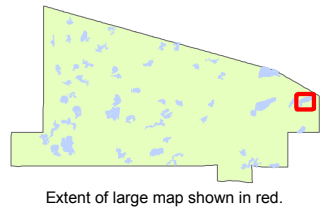


2,200  
Feet

Printed 5/21/2009 by Mapping Dept.



Treatment Areas			
Site	Acres	Avg. Depth	
A	6.9	2.6 feet	
B	22.4	4.0 feet	
C	43.7	6.0 feet	
<b>Total</b>	<b>73.1</b>		

# Big Sand Lake

Vilas County, Wisconsin

## 2009 Proposed EWM Treatment Areas

Sources:  
Road & Hydro: Vilas County  
Treatment Areas: Barb Gajewski, May 2009